

Brunifiering och Flöde i Bolmen

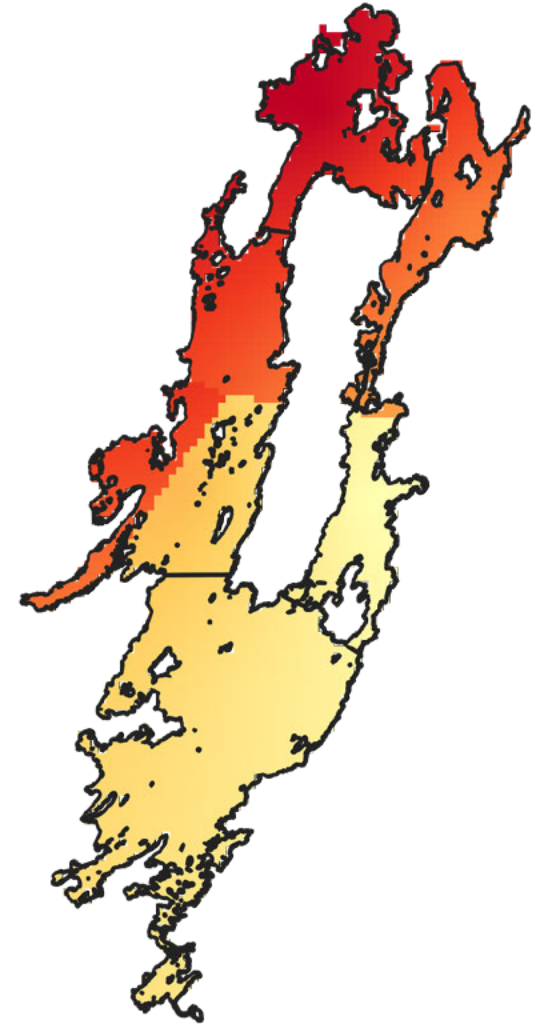
Clemens Klante

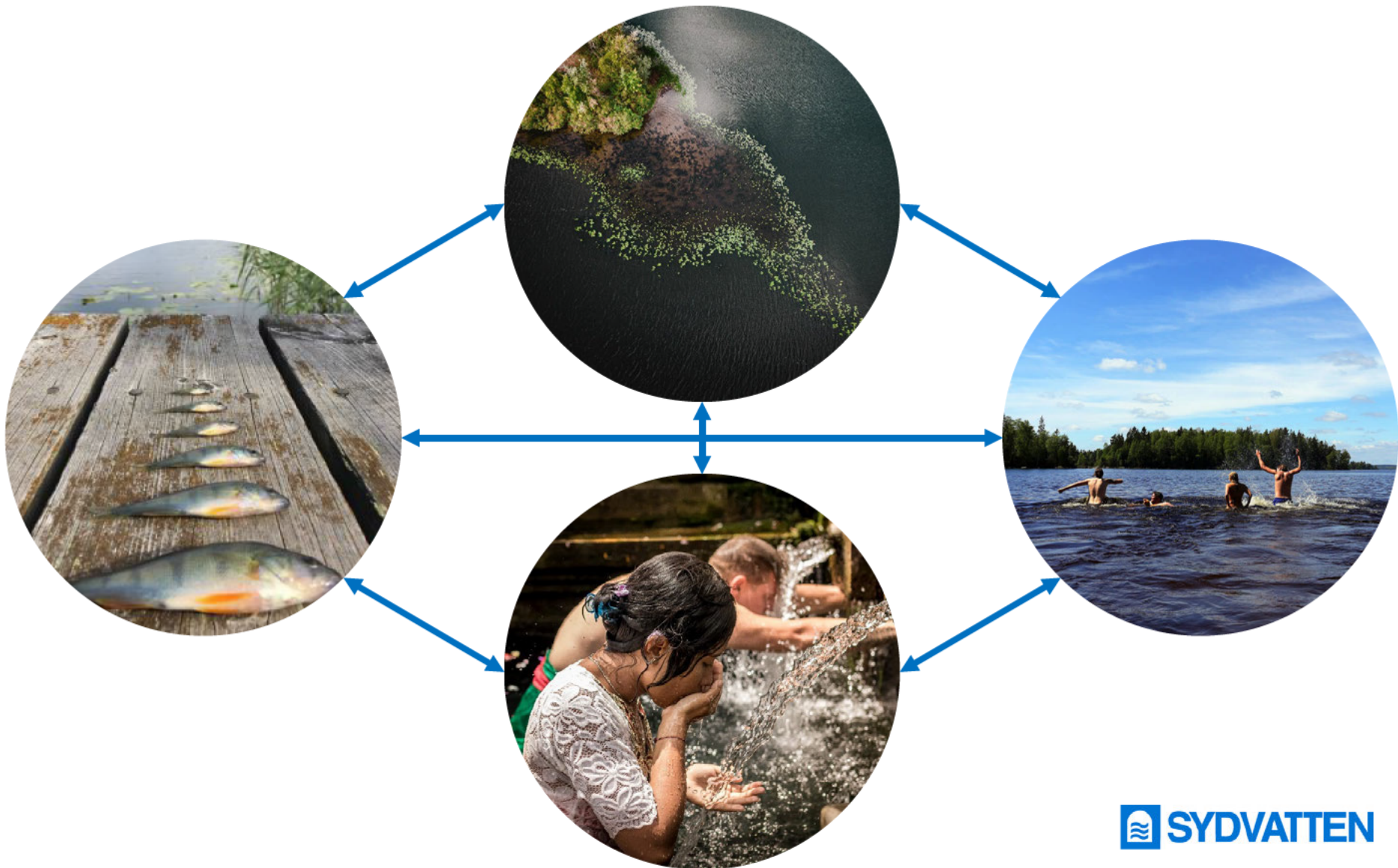
Vattenkonferensen, Tiraholm

2023-05-26



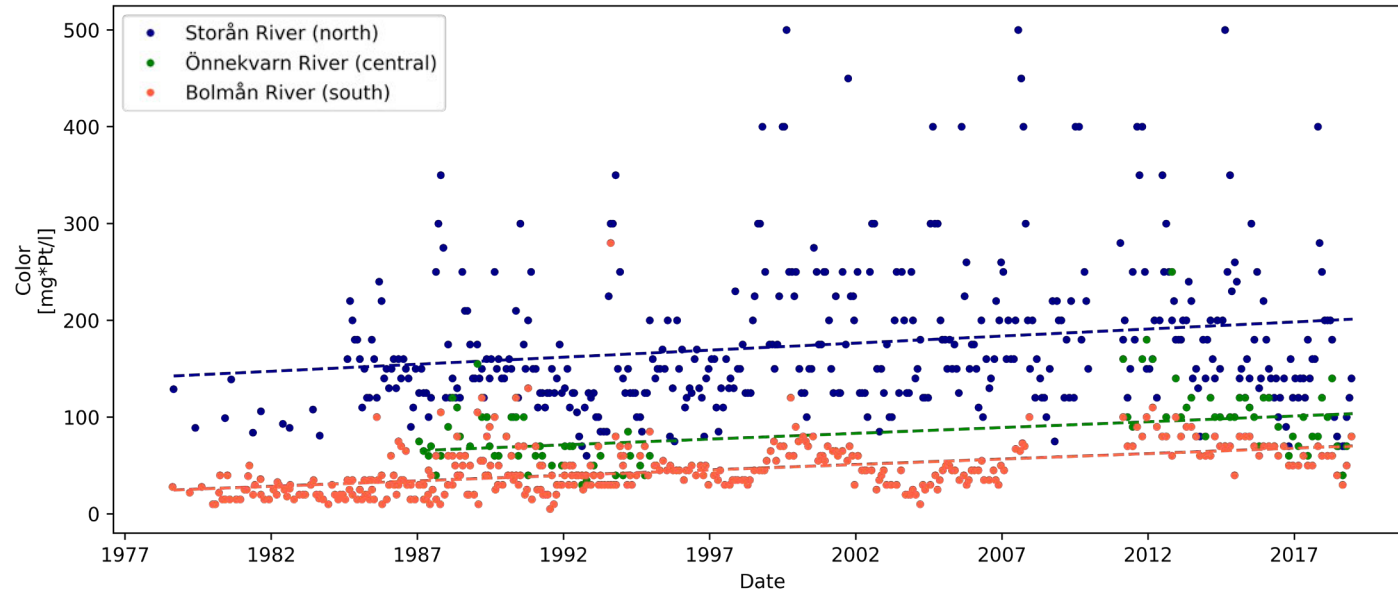
Brunifiering





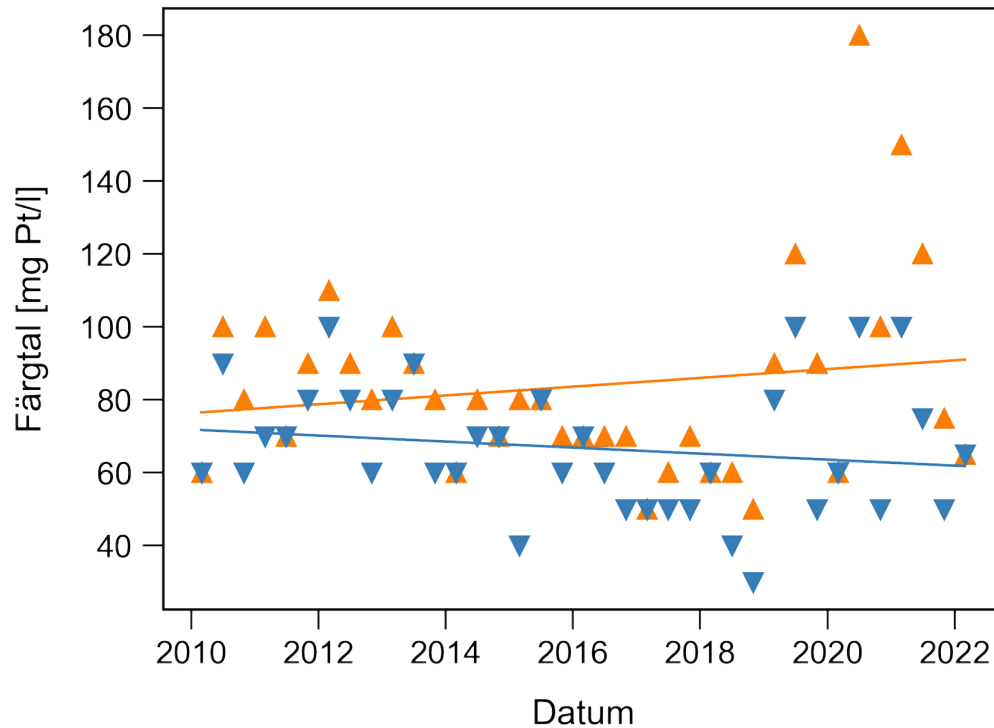
Förändringar i Bolmen

- färgtalen har dubblats

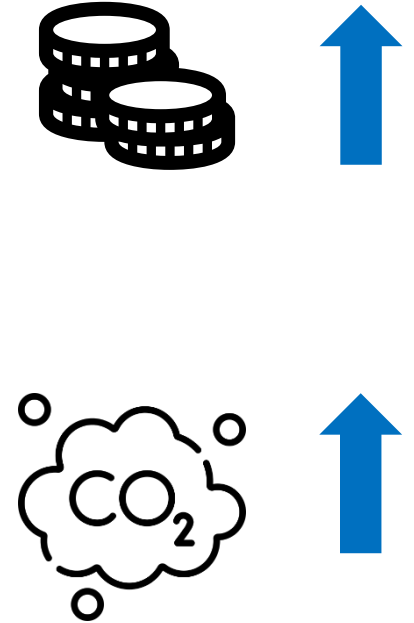
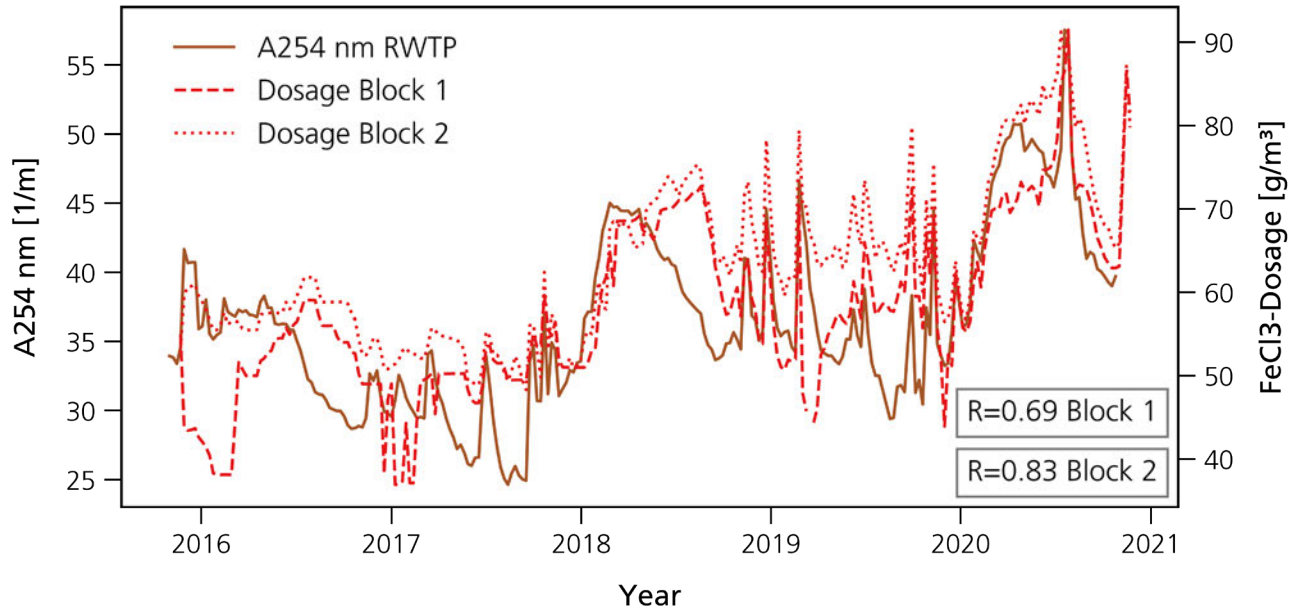


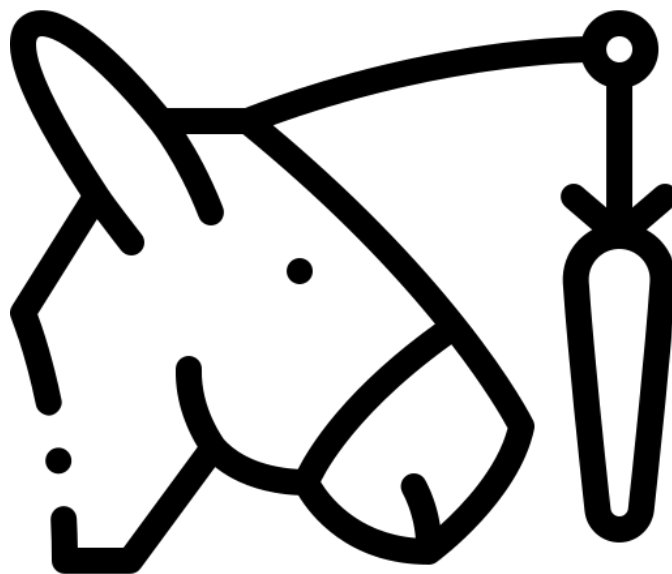
Förändringar i Bolmen

- färgtalen dubblats
- ökade skillnader under året



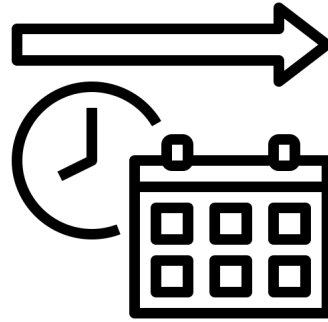
Ökat insatser



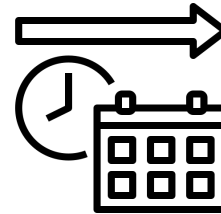
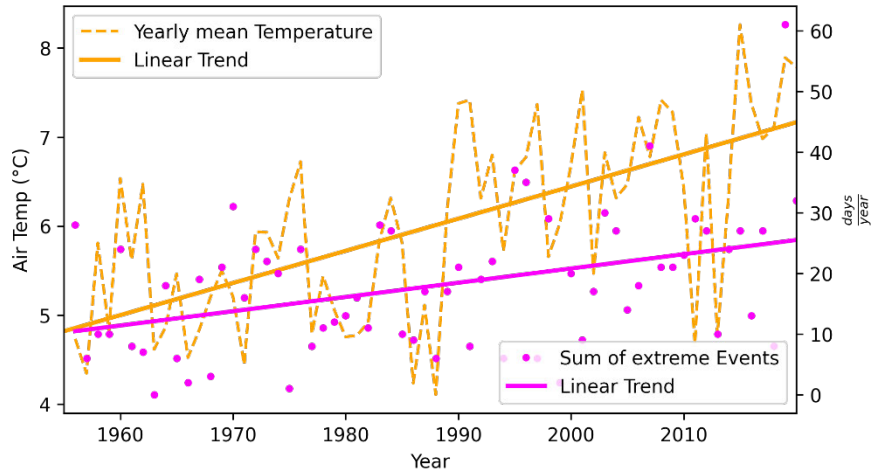
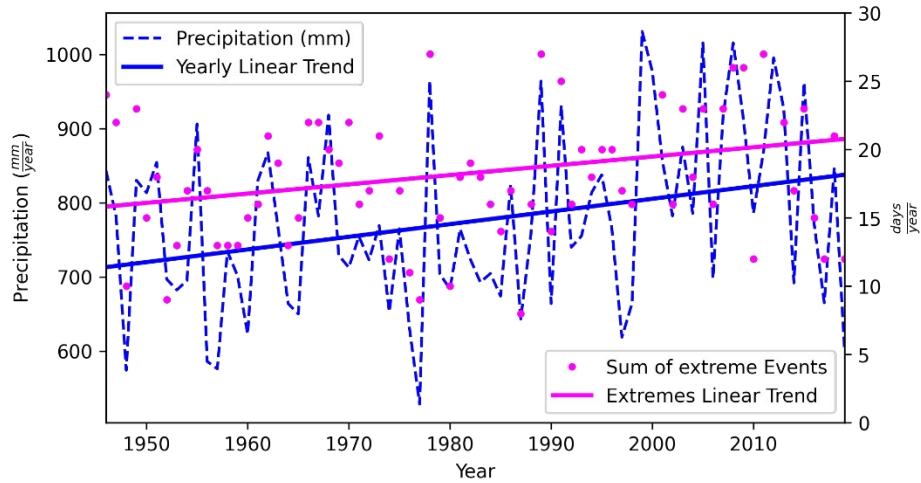


VAD DRIVER BRUNIFIERING?

Klimat och Klimatförändringar



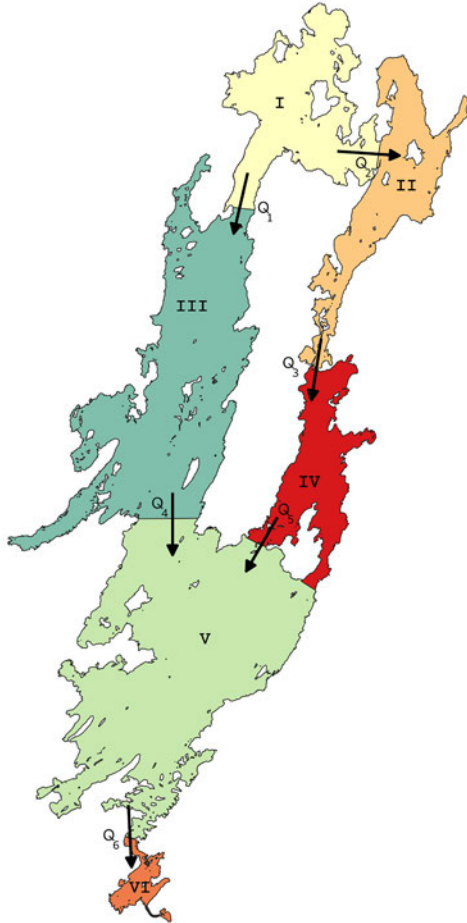
Klimat och Klimatförändringar



Skogen och markanvändning som drivande kraft

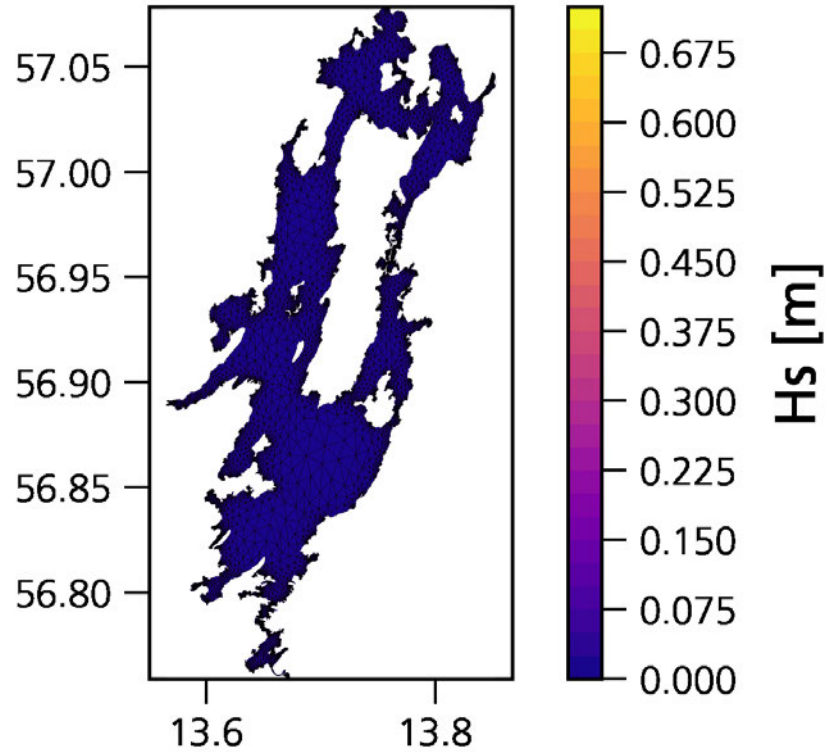


Bolmens transport mönster

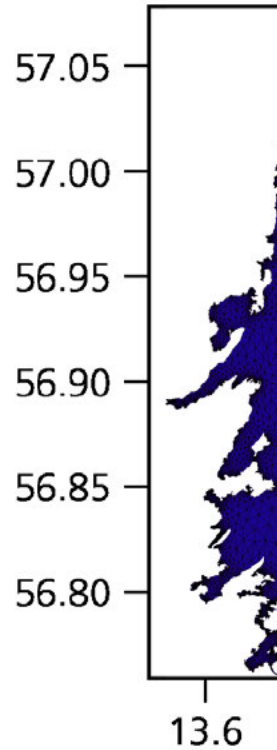


- 1,6 år omsättning
- 6 olika bassäng
- 80 % av vatten genom västra sidan
- 22 % – 45 % längre transporttid genom östra sidan

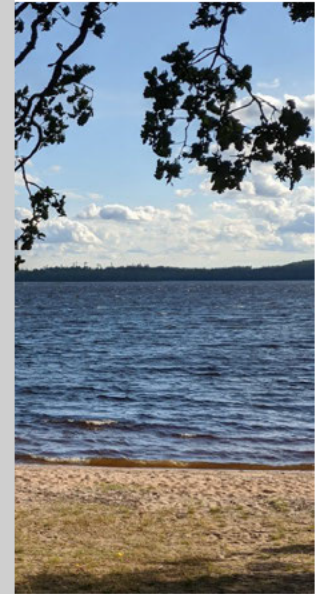
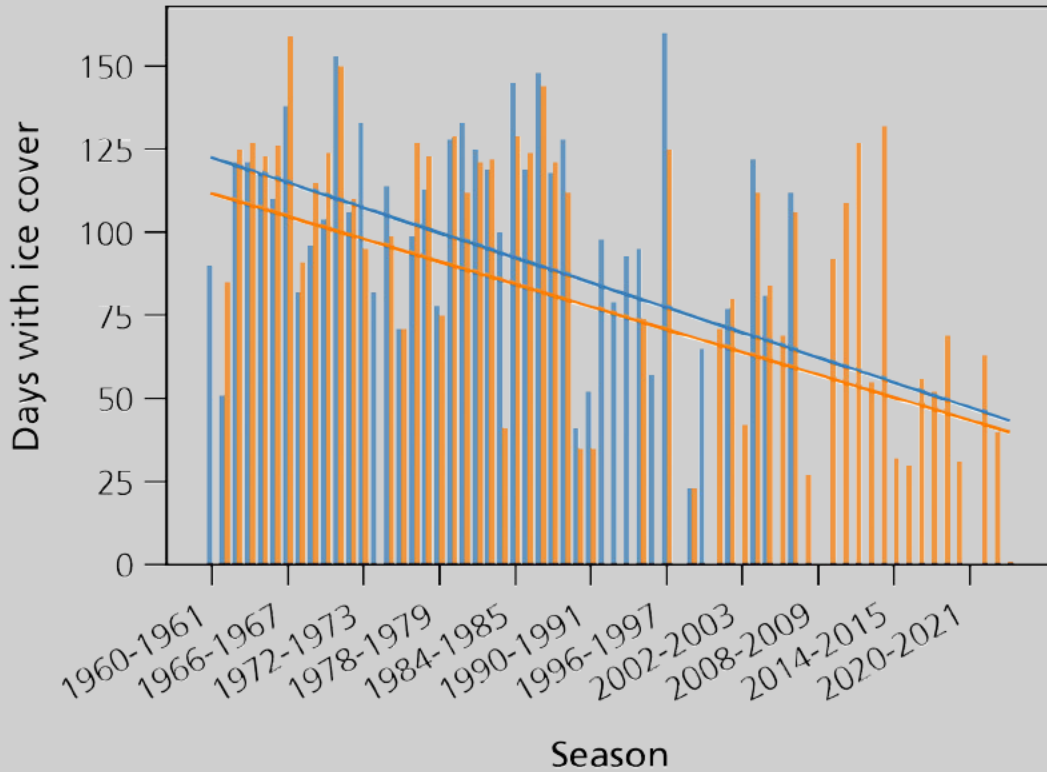
Resuspension genom vågor



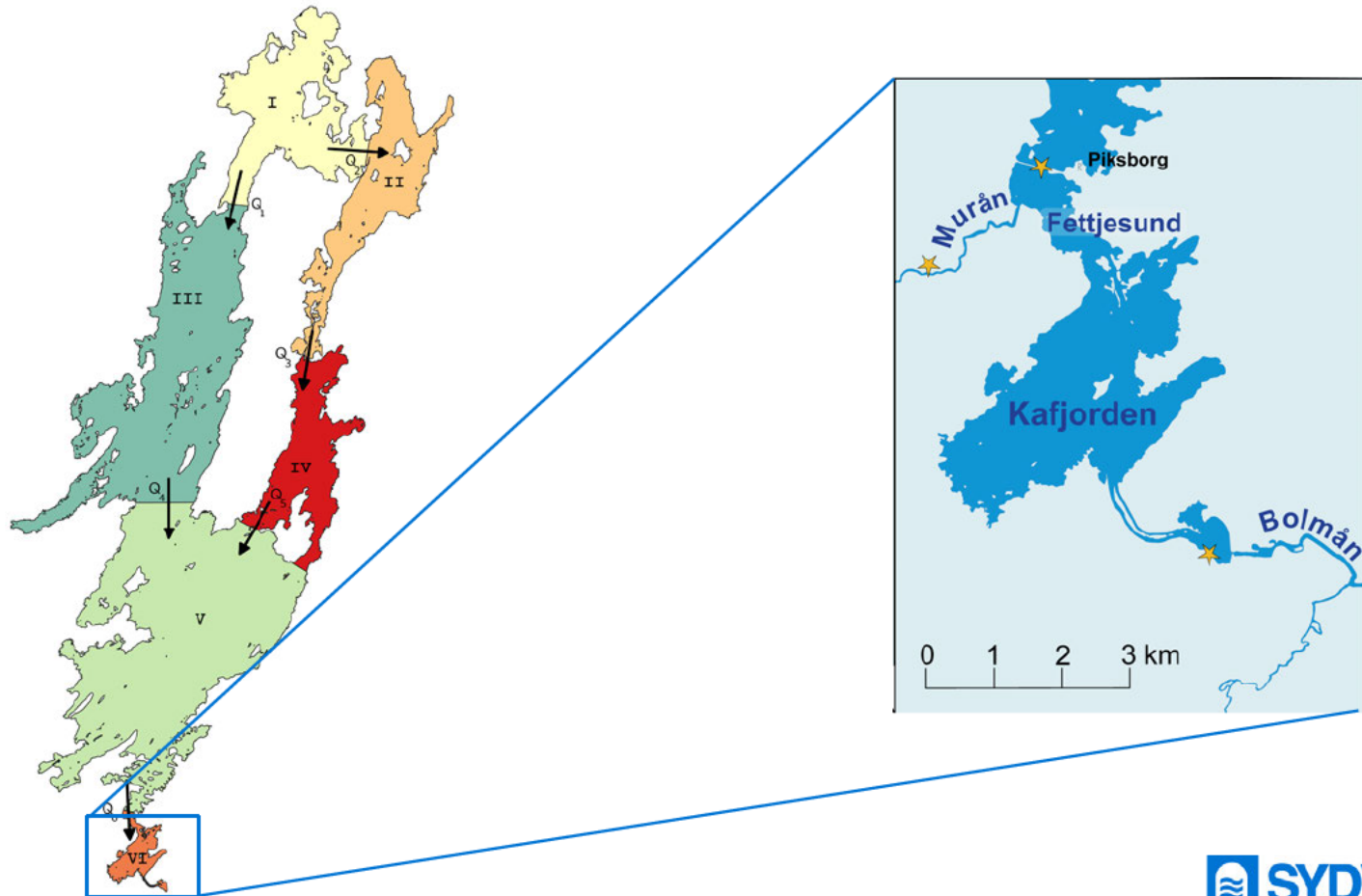
Resuspension genom vågor



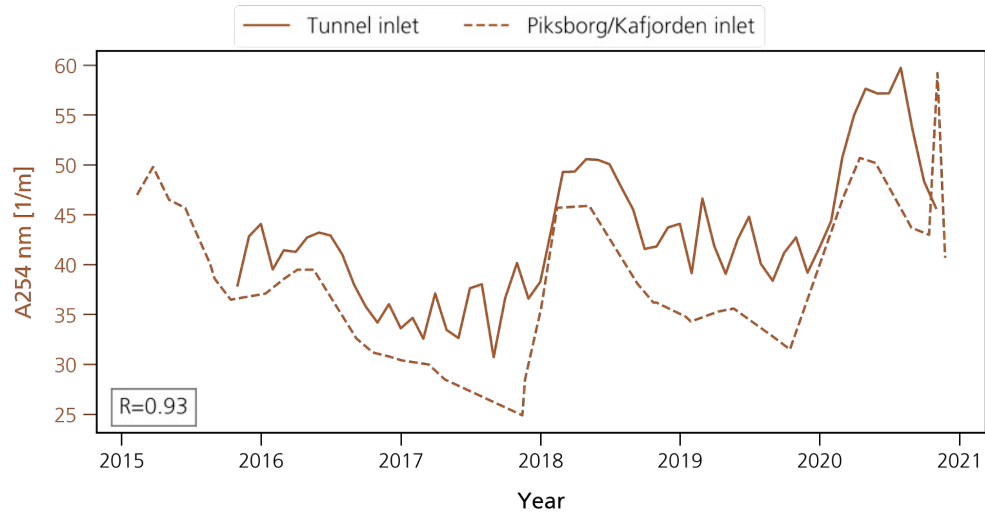
— linear trend Bolmen ■ Ice cover lake Bolmen
— linear trend Vidöstern ■ Ice cover lake Vidöstern



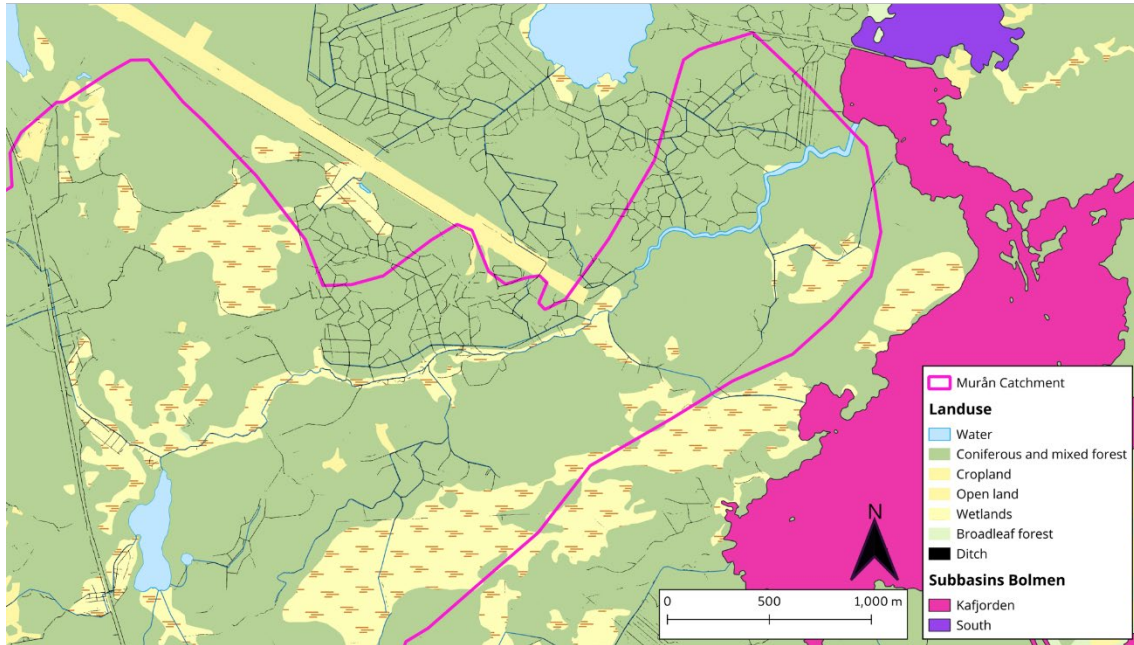
Kafjorden

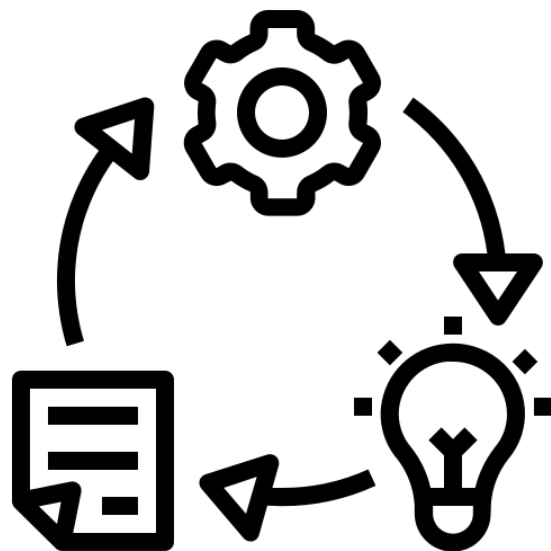


Murån som utmaning



Diken som drivande kraft?





KAN VI GÖRA NÅGOT?

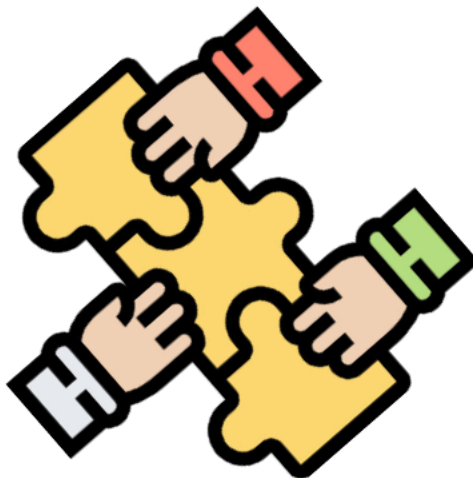


Våtmarker som åtgärd?

Annorlunda skogsskötsel?



Härkönen et al., 2023



LUNDS
UNIVERSITET



sweden
water
research



HÖGSKOLAN
I HALMSTAD



Linnæus University



Länsstyrelsen
Skåne



Länsstyrelsen
i Jönköpings län



Region Halland



LÄNSSTYRELSEN
HALLANDS LÄN



Smålands
sjörike



